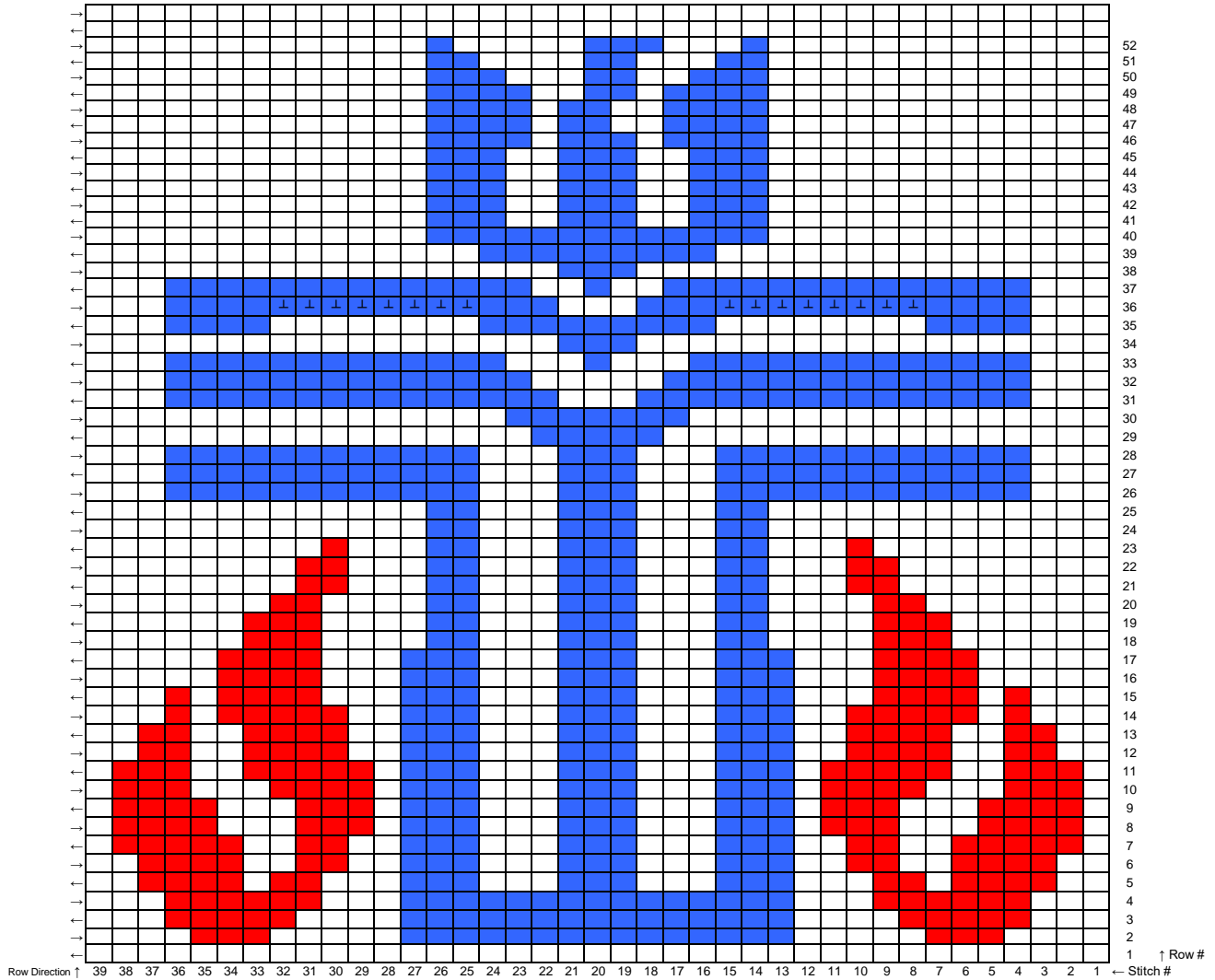
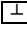


## Presbyterian Symbol Graph



Each square of this chart represents a half double crochet

You could use any brand of yarn you prefer for this project. I prefer the softer yarns such as Caron Simply Soft or Red Heart soft when making Scarves. This could be used for pillows or wall hangings also.

**Symbol Note:**  For the stitches with this symbol, work the HDC Between the stitch in the row below instead of in the actual stitch. This will help form a better arch instead of a straight line.